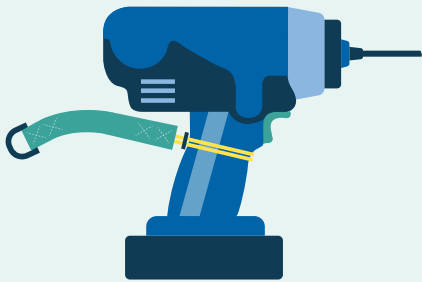


# 3 Ts

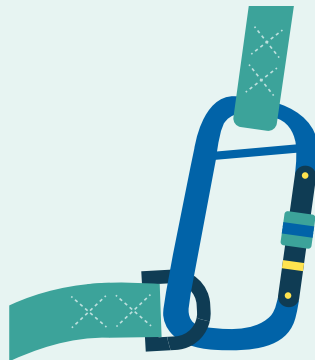
## That Will Prevent Dropped Objects in Construction

Dropped objects are a leading cause of injuries to construction workers. Fortunately, there's a powerful memory device that can help safety professionals respond. Just as personal fall prevention provides the ABCs (anchor, body support, connectors), dropped object prevention involves the three Ts.



### Trapping

- Trapping describes the **installation of retrofit attachment points** on tools and primary anchoring locations.
- Install anchor attachments on secure locations and remember they are never intended for heavier tools if applied to a person.



### Tethering

- Tethering means **attaching tools and equipment to the anchor points that hold them**, and it often involves use of lanyards.
- You can even adapt tools that seem untetherable, because they lack attachment points, for safety.



### Topping

- Topping refers to the **containers that workers use to bring tools and equipment** to and from heights.
- Make sure these containers have secure closures or tops that can cover the contents and prevent them from spilling if tipped.

### Learn More

Gravity doesn't discriminate. For more tips on how to start or strengthen your dropped object safety program, join your peers at SafetyFOCUS.

<http://assp.us/SafetyFOCUS>



**Safety**  
**FOCUS**  
Immersive Education  
for Safety Professionals